

Aimee June Winery

Handcrafted Value®

High quality boutique wine at affordable everyday prices

Everyday wine customers struggle to find quality and value.

Aimee June solves this by providing unique, boutique wines at affordable prices

Challenging retail shelves for a \$18 - \$20 bottle of wine and wine lists for a \$10 - \$14 glass.

- Fruit sourced from quality vineyards in the Paso Robles region, San Benito County, and locally in Santa Clara County. We focus on elevation, soil, climate, and vineyard management.
- Original artwork hand painted or drawn is featured on each label released, bringing artistic value and a sense of personal touch to the customer.





Our story of sharing art and an upgraded affordable wine experience

In 2003 the Masoni family having 100+ acre of farmland, including wine grapes encouraged us to make wine. Our daughter Ashley, having a passion for hand drawn and painted art, provided labels featuring new artwork for each wine.

In 2009, our family wine was finding its way to friends, and friends of friends. Later that year we became a legally bonded winery leveraging our experience to make quality wine for sale.

For many years, we enjoyed hosting a tasting room and retail sales in the historic town of San Juan Bautista. In 2019, we realized the personal commitment to the tasting room was too much, and our wholesale business was growing. We closed our tasting room and focused our time improving wine quality and value for wholesale. Having success with several out of state buyers, we are continuing our focus to growing our wholesale business.



Our labels invite a personal connection

Aimee June
Handcrafted Value®



Aimee June
Handcrafted Indulgence



Aimee June
Handcrafted Value®



Aimee June
Handcrafted Value®



Aimee June
Handcrafted Value®



Aimee June
Handcrafted Value®



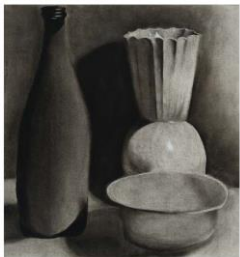
Aimee June
Handcrafted Value®



Aimee June
Handcrafted Value®



Aimee June
Handcrafted Value®



Aimee June
Handcrafted Value®



Aimee June
Handcrafted Value®



Aimee June
Handcrafted Value®





We do it with passion, relationships, and partnerships

- Strong relationships with growers and vineyard managers.
- Low-cost access to a high-volume manufacturing facility.
- Established relationships with suppliers for barrels, Oak alternatives, bottling supplies, fruit, and most everything we need. These suppliers provide competitive pricing, quality products, and are supportive of our business growth.



- We are experienced. Becoming a bonded winery in 2009, we have had success and failure. We've struggled to overcome winemaking challenges, finding good supportive suppliers, and developing a business model for success.





Facility supports capacity ranging from small lots to large volume production



- This is a historic facility and one of the first bonded wineries in California.
- We are not a custom crush winery. We own our equipment and lease winery space, supporting a low operating cost.
- Operating here for over 8 years, we have a positive and supportive relationship with the facility owners with access to staff and additional equipment as needed.





Committed and positioned
to deliver our goal

2020 and 2021 harvest demonstrate our ability to produce volume, high quality wines at affordable, everyday prices.

In 2020 we processed 56 ton of quality fruit sourced from vineyards not impacted by smoke.

- From this we have produced over 8,000 gallons of new wine.
- We are excited about the quality and our accomplishment to make the volume.

In 2021 we processed 15 tons of high-quality fruit sourced from the Paso Robles region, including both the Adelaida and Templeton Gap Districts.

- From this we have produced 1,700 gallons of wine.
- Utilizing our grower relationships, we were able to source this fruit with competitive prices.



Current & Upcoming Varietals

AVA	Released	Upcoming
Adelaida, Paso Robles	<ul style="list-style-type: none"> Tannat Sangiovese 	<ul style="list-style-type: none"> Tannat Grenache Sangiovese Zinfandel Touriga
Templeton Gap, Paso Robles	<ul style="list-style-type: none"> Cabernet Clone-8, Old Vine 	<ul style="list-style-type: none"> Cabernet Clone-8, Old Vine Rhone Blend Mourvèdre
Paso Robles	<ul style="list-style-type: none"> Cabernet Sauvignon 	
San Benito County	<ul style="list-style-type: none"> Cabernet Franc Sagacious Red Blend Malbec Petite Sirah 	<ul style="list-style-type: none"> Cabernet Franc Sagacious Blend Petite Sirah
Santa Clara County	<ul style="list-style-type: none"> Mission Grenache Riesling 	





We have competitive products shelf ready today

Current customers include small to medium size retail markets and wine bars in California and several other states.

- Over 1,700 case of shelf ready wines.
- Wine is targeted for \$20 and less on a retail market shelf.
- We also have premium wines from specialty vineyards and winemaking.



Winery Direct distribution partners include:

- LibDib for CA, CO, CT, FL, NY, NJ, WI, IL, TX, MD
- European Wine and Spirits for CO
- Terroir Wine and Hangtime Wine for MA
- Main Street Wine Imports for MA
- We can establish Winery Direct distribution in most states.



Looking forward to a continued conversation

- Challenging retail shelves for an \$18 - \$20 bottle of wine
- Challenging wine lists for a \$10 - \$14 glass of boutique wine
- Independently owned, small family winery
- Original artwork creating a personal connection
- Distribution partners in many states and expanding
- We're easy to work with on mixed, small, & large orders, custom labels, and event pricing
- Small – medium sized boutique vineyards sourced in Paso Robles, San Benito, and Santa Clara County
- We are not a custom crush winery. We own our equipment and lease winery space, creating a low operating cost to support small and large production.



Ashley Peterson (artist, winemaker, and co-owner) 408-621-7355

Gerald (Gery) Peterson (owner and winemaker) 408-621-7354

winery@californiabestwine.com

*Documents
available online*

